

RICOH
imagine. change.

Ricoh Aficio MP C305

Multifunction Color

✓ Copier ✓ Printer ✓ Facsimile ✓ Scanner



MP C305

31
ppm
monochrome
and full-color

Compelling color and powerful performance is within your reach

Your business thrives when you maximize resources to work faster and more efficiently. Shouldn't you expect the same from your desktop color multifunctional device? The RICOH® Aficio® MP C305 combines user-friendly controls, versatile performance, robust security, and energy and paper savings in a compact solution that's specifically designed for convenience and affordability. This innovative system leverages advanced capabilities found only in Ricoh's services-led platform that simplify even the most complex printing, copying, scanning, faxing, and distribution tasks. Make it the primary device for your small office or workgroup or use it as part of an integrated Ricoh Managed Document Services (MDS) strategy to help enhance productivity and reduce total cost of ownership by saving paper and electricity throughout your organization.

The Convenience of Total Control

The Ricoh Aficio MP C305 includes a tiltable, 4.3" color touch-panel display that allows users to customize preferences, unique workflows and shortcuts to help maximize productivity. Users can select up to three specific functions with one-touch operation for incredible speed and convenience. For advanced document mobility, users can print-from or scan-to a USB flash drive or an SD card without a PC.



The Power of Productivity

This versatile device allows you to accomplish more tasks quickly and reliably with black-and-white or full-color documents at speeds of up to 31 pages per minute with enhanced first copy time at 6.9 seconds (black) and 10.8 seconds (color). The sleek and compact design fits even the tightest office spaces for optimal convenience. The standard 350-sheet paper capacity can be expanded to 1,350 sheets to support longer, uninterrupted runs. With a standard 1 GB RAM and an optional 128 GB Hard Disk Drive (HDD), the device comes equipped with incredible power to maximize performance and storage capabilities even in shared-use environments.



Improve Your Total Cost of Ownership

With its innovative direct fusing and power management technologies, the MP C305 can save more electricity by shortening the time it takes to recover from its "1W" Sleep Mode to only 10 seconds. Its class leading energy efficiency is based on its extremely low Typical Electricity Consumption (TEC) of only 1.2 kWh/week. When you combine short recovery time from Sleep Mode, high speed duplex printing with an enhanced first copy out time, the result is a productive system that provides quicker availability and energy savings.



Streamline operations and improve workflow in small offices and workgroups

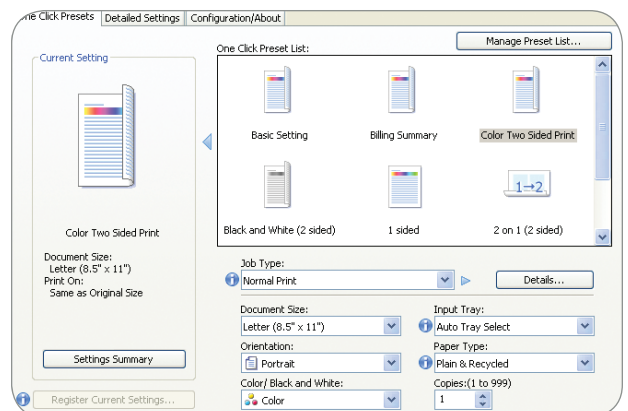
Flow from One Job to the Next

The Ricoh Aficio MP C305 works effortlessly — so you can, too. Simplify even the most complex tasks with a host of advanced features. The optional one-bin tray allows you to separate different output such as faxes from print jobs so users don't waste time sifting through large stacks of documents. The auto job promotion feature lets users bypass problem print jobs easily. In addition, color thumbnails of scanned documents can be previewed for accuracy before being distributed via Scan-to-Email/Folder/HDD/USB.



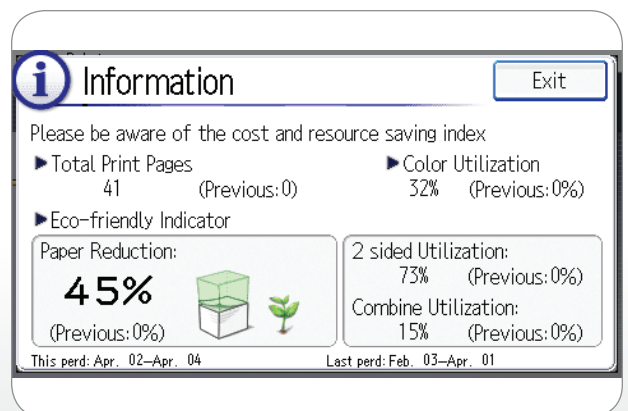
Optimize the Way You Work

Work more efficiently in the office — and behind the scenes. The Ricoh Aficio MP C305 offers several user-friendly management tools and robust security features to enhance performance. Simplify workflow with icon-driven Ricoh Aficio one-click, preset user interface drivers. Set quotas for users and workgroups to minimize excessive printing and to help reduce operating costs. Attach digital signatures, limit access to confidential documents, encrypt data with algorithms and use LDAP authentication to help ensure document integrity. With a host of innovative network capabilities, users can work efficiently from their desk or on the go. The Aficio MP C305 enables users to print directly from most manufacturers' smartphones by downloading their application for convenient output where and when it's needed most.



Efficiency That Communicates

The MP C305 has the ability to show individual user's printing results, helping them to better understand their printing behavior. This feature highlights the amount of pages the user has printed, the color ratio of the documents as well as the duplex and combined print ratio, which details the overall paper reduction. This information can be utilized to more effectively manage printing resources and identify opportunities to minimize environmental impact and save additional paper and costs.



Ricoh Aficio MP C305

SYSTEM SPECIFICATIONS

Aficio®

General Specifications

Configuration	Desktop
Scanning Element	One-dimensional solid scanning through CCD
Printing Process	Dry electrostatic transfer system with dual component development; 4-drum method
System Memory	1 GB (RAM)
Output Speed (Copy/Print)	Up to 31 cpm (Letter)
First Copy Time	B/W: 6.9 seconds; Full-Color: 10.8 seconds
Recovery Time to Print Ready Mode	Less than 23 seconds (from Main Power Switch On)
Copy Resolution	Less than 10 seconds (from Sleep Mode)
Exposure Adjustment	600 x 600 dpi
Multiple Copies	Manual and automatic
Document Feeder (Standard)	Up to 99
Original Capacity	Automatic Reversing Document Feeder (ARDF)
Paper Sizes	50 sheets (ARDF)
	Standard Tray: 5.5" x 8.5" to 8.5" x 11"
	Optional Trays: 5.5" x 8.5" to 8.5" x 14"
	Bypass Tray: 5.5" x 8.5" to 8.5" x 14"
	Duplex Unit: 5.5" x 8.5" to 8.5" x 14"
	Standard Trays: 16 – 43 lb. Bond (60 – 163 g/m ²)
	Optional Trays: 16 – 43 lb. Bond (60 – 163 g/m ²)
	Bypass Tray: 16 – 58 lb. Bond (60 – 220 g/m ²)
	Duplex Unit: 16 – 43 lb. Bond (60 – 163 g/m ²)
	Exposure Glass
	Up to 8.5" x 14"
Input Capacity	Standard: 250 sheets + 100-sheet Bypass Tray
Output Capacity	Optional: 500 sheets x 1 or 2 Trays
	Standard: 100 sheets
	Optional: 200 sheets (total) with One Bin Tray
Paper Types	Plain, Recycled, Colored, Letterhead, Preprinted, Bond, Card Stock, Special, Coated, Waterproof, Back Copied, Middle Thick, Thick, OHP (Transparency)*, Envelopes*, Label Stock*
Auto Duplex	Standard
Zoom	25% to 400% in 1% increments
Preset Reduction and Enlargement Ratios	65%, 78%, 93%, 129%, 155%
Dimensions (WxDxH)	19.6" x 20.9" x 19.9" (498 mm x 532 mm x 505 mm) – includes ARDF and Operation Panel
Weight	99.2 lbs. / 45 kg.
Power Requirements	120V, 60Hz, 15A
Power Consumption	Less than 1.3 KW (max.); 1 W (Sleep Mode)
TEC**	MP C305SP – 1.198 kWh/week
	MP C305SPF – 1.231 kWh/week
Standard Features	Auto Tray Switch, Image Rotation, Auto Off Timer, Combine Copy, Electronic Sort, Energy Saver Timer, Photo Mode, Series Copy, Job Programs, User Codes (1,000) Document Server
Optional Features	

*Bypass Tray only.

**Typical Electricity Consumption by Energy Star Program.

Printer Specifications

CPU	RM7035C – 533MHz
Memory Capacity	Standard: 1 GB
Hard Disk Drive	Optional: 128 GB HDD
Page Description Languages	Standard: PCL5c/6, Genuine Adobe® PostScript®3*, PDF Direct, PictBridge (option)
Maximum Print Resolution	1200 x 1200 dpi
Standard Interfaces	Ethernet (10BASE-T/100BASE-TX), USB 2.0 (Type A and B)
Optional Interfaces	Wireless LAN (IEEE 802.11a/b/g), IEEE 1284, Gigabit Ethernet (1000BASE-T), Bluetooth
Network Protocols	TCP/IP (IPv4, IPv6), IPX/SPX (available with Network option)
Network Operating Systems	Windows XP/Vista/Server 2003/Server 2008/Server 2008R2/7; Novell Netware 6.5; UNIX Filters for Sun Solaris 2.6/7/8/9/10; HP-UX 10.x/11.x/11v2/11v3; Red Hat Linux Enterprise V4, V5, V6; SCO OpenServer 5.0.6/5.0.7/6.0; IBM AIX Version 5.3, 6.1, 7.1; SAP R/3, 3.x or later, mySAP, ERP2004 or later; Mac OS X 10.2 or later, Citrix Metaframe XP/ Presentation Server 4, 5/XenApp 5.0, 6.0
Utilities	SmartDeviceMonitor for Admin and Client, Web SmartDeviceMonitor, Web Image Monitor
Other Printer Features	Standard: Banner Page Print, Bonjour Support, Classification Code, PDF Direct Print, CLP Simulation, Windows Active Directory Support, DDNS Support, PCL Resident font adoption, WS Printer, 1200dpi Support, XPS Support
	Optional: Media Direct Print (Print-from USB/SD), Auto Job Promotion, Scheduled Print, Mail to Print, PictBridge, Sample/Hold/Stored/Locked Print, Store and Print
Scanner Specifications	
Scanning Speed	31 ipm @ 200 dpi B/W
	31 ipm @ 200 dpi Full Color
Scanning Resolution	100 to 600 dpi
Scan Area	Main: 8.5" (216 mm)
	Sub: 14.02" (356 mm)
Compression Method	B/W: MH, MR, MMR, JPEG, JPEG2000, JBIG2
	Full-Color: JPEG, JPEG2000
Scan Mode	B/W: Text, Text/Line Art, Text/Photo, Photo, Grayscale
	Full-Color: Photo, Standard ACS
Standard Interfaces	Ethernet 10BASE-T/100BASE-TX
Optional Interfaces	Wireless LAN (IEEE 802.11a/b/g), Gigabit Ethernet (1000BASE-T)
File Formats	Single/Multi Page TIFF, Single/Multi Page PDF, Single/Multi Page High Compression PDF and Single/Multi Page PDF/A; Single Page JPEG
Scan Modes Supported	Scan-to-Email (POP, SMTP, IMAP4); Scan-to Folder (SMB/FTP); Network TWAIN Scanning; Scan-to-Media (USB/SD)

Standard Features

Scan-to USB/SD, PDF Encryption, Drop Out Color Send, (Simultaneous FAX and Scan), Scan-to PDF-A/Digitally Signed PDF, Scan-to-Email/SMB/FTP, LDAP Support, Preview Before Transmission (TX Preview), Scan-to URL, Scan-to Folder (NCP)

Optional Features

Fax Specifications

Type	ITU-T (CITT) G3
Circuit	PSTN, PBX
Resolution	200 x 100 dpi, 200 x 200 dpi
Modem Speed	33.6K – 2,400 bps with Auto Fallback
Compression Method	MH, MR, MMR, JBIG
Scan Speed	2.4 seconds
Transmission Speed	Approx. 2 seconds/page (200 x 100 dpi, JBIG)
Memory	4 MB (approx. 320 pages)
Memory Backup	12 hours
Quick/Speed Dials	200 (2,000 with HDD Option)
Group Dials	10 groups (max. 100 numbers per group with HDD option)
User Function Key	3 keys
Standard Features	Detection of Misplaced Documents, Double Check Destination Address, Direct SMTP, Serial Broadcasting, Fax Forward to Email/Folder, Internet Fax (T.37)*, IP Fax (T.38)*, LAN Fax, Paperless Fax*, LDAP Support

*Features require HDD option.

Hardware Options

Paper Feed Unit PB1050 (Option)

Paper Size	5.5" x 8.5" SEF, 8.5" x 14" SEF
Paper Weight	16 – 43 lb. Bond (60 – 163 g/m ²)
Paper Capacity	500 sheets x 1 or 2 trays

1 Bin Tray BN1010 (Option)

Paper Size	5.5" x 8.5" SEF to 8.5" x 14" SEF
Paper Weight	16 – 43 lb. Bond (60 – 163 g/m ²)
Paper Capacity	200 sheets (total output with standard tray)

Additional Options

Counter Interface Unit A, MP C305 Low Cabinet, MP C305 Medium Cabinet, MP C305 High Cabinet, Browser Unit Type H, Camera Direct Print Card Type K, Gigabit Ethernet Board Type A, Java VM Card Type U, Handset Type C5502, Hard Disk Drive Option Type C305, IEEE 1284 Interface Board Type A, IEEE 802.11a/b/g Interface Unit Type J, Bluetooth Interface Unit Type D, Copy Data Security Unit Type G, File Format Converter Type E, SD Card for NetWare Printing Type J, Unicode Font Package for SAP 1/10/100 Licenses

Note: Hard Disk Drive Option Type C305 includes both the DataOverwriteSecurity Unit (DOSS) and HDD Data Encryption.

Security

Features Supported: HDD Data Overwrite, Authentication: Windows/LDAP/Basic/User Code/802.1x Wired; Encryption: Address Book/Authentication Password/SSL Communication/S/MIME/IPSec Communication/Locked Print Password/HDD, Quota Limit Setting, SMTP over SSL, IP Filtering, Copy Data Security, Kerberos, Network Protocol ON/OFF

Some features may require additional options.



MP C305 with one bin tray



MP C305 with optional PB1050 Paper Tray



MP C305 with two optional PB1050 Paper Trays

RICOH
imagine. change.

www.ricoh-usa.com

Ricoh Americas Corporation, Five Dedrick Place, West Caldwell, NJ 07006, 1-800-63-RICOH
Ricoh® and the Ricoh Logo are registered trademarks of Ricoh Company, Ltd. All other trademarks are the property of their respective owners. The content of this document, and the appearance, features and specifications of Ricoh products and services are subject to change from time to time without notice. Products are shown with optional features. While care has been taken to ensure the accuracy of this information, Ricoh makes no representation or warranties about the accuracy, completeness or adequacy of the information contained herein, and shall not be liable for any errors or omissions in these materials. Actual results will vary depending upon use of the products and services, and the conditions and factors affecting performance. The only warranties for Ricoh products and services are as set forth in the express warranty statements accompanying them.

R3362

