

# Canon

CANON SOLUTIONS AMERICA

 **imageRUNNER**  
ADVANCE

**6275 / 6265 / 6255**

**Office  
Solutions**

multifunction printer

high speed, high volume

black-and-white copy/print

color scan



**Simply advanced.**

Designed for

**High-volume offices  
that demand exceptional  
productivity**

Standard Features

Copy/Print/Send/Store

Black-and-White Copy/Print

Color Scan and Send

Print up to 75 ppm (Letter)

Up to 1200 x 1200 dpi

Up to 11-3/4" x 19-1/4"

7,700-sheet maximum capacity

Scan up to 200/100 ipm single-pass duplex

Flexible in-line finishing options

Scan directly to Microsoft® PowerPoint®  
and Searchable PDF formats

Hard Disk Drive Lock and Erase, IPsec



# Simply advanced.

The imageRUNNER ADVANCE 6200 Series transforms workflow from a sequence of individual processes to an integrated flow of shared information. A center for digital communications, this Series will propel your business to new levels of performance and productivity. From every point of view, these models are simply advanced.



## People-Centric

An exceptionally intuitive, simple-to-use interface puts access to all functions right at your fingertips, whether at the device or at your desktop.



## Productive

Amazing speed, nonstop operation, and automated features let you accomplish so much more in so little time.



## Mobile

Even on the go, you're in control. Print from a laptop, tablet, or smartphone to an imageRUNNER ADVANCE system.



## Cloud-Enabled

A touch of a button on the user interface lets you access, scan to, or print directly from, certain cloud applications.



## Connected

Advanced technology and expansive enterprise applications work seamlessly with your device to deliver exceptional results.



## Security

Multilayered solutions safeguard confidential information and, with certain options, support security compliance.



# Simple to use. Truly personalized.

The industry leader for Ease of Use just got even better.\* The Canon imageRUNNER ADVANCE 6200 Series boasts a highly customizable interface that offers individuals and workgroups a genuinely personalized, efficient way to work.

## A smart, intuitive interface

The imageRUNNER ADVANCE 6200 Series is designed with you in mind. With an impressive range of customizable, simple-to-use, streamlined features, these models let users work smarter and faster. With a large, full-color, high-resolution 8.4" TFT screen, users can easily view all information.



### Two menus

Press the Main Menu key to gain instant access to business-ready functions. Use the Quick Menu to power productivity by combining and accessing routine tasks at the touch of a button.



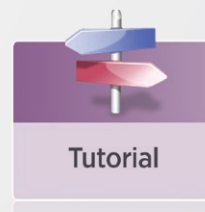
### Customizable

Organize the on-screen buttons to fit the way you work by determining their number, size, and layout. Display your own logo or special graphic as a screen background—even export your chosen background to other devices.



### Web-ready

The optional Web browser lets you go online directly from the device control panel. Just enter a URL to browse pages. Easily output online PDFs.



### Handy tutorials

Quickly access simple, step-by-step instructions right on the user interface.



## Designed for ease

Thoughtful details, such as a light under the Automatic Document Feeder to alert you that your originals remain and an optional USB keyboard, allow you to work more comfortably. Toner bottles can be replaced with minimal effort, and paper drawers spring open at the touch of a button.



ADF Light



USB Keyboard



Easy Toner Access

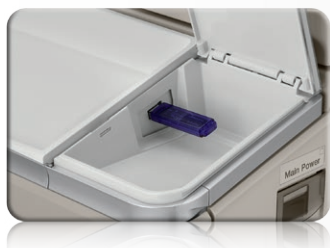


One-button Paper Access



## Engineered for adaptability

These intelligent systems help you achieve your goals now and in the future. With the ability to smoothly integrate hardware and software solutions, the imageRUNNER ADVANCE 6200 Series lets you personalize applications to meet your organization's changing needs. And it's highly flexible, so you can easily add to, or update, your system with the quick deployment of settings across your enterprise.



## Walk-up convenience

Easily scan to, or print from, a USB thumb drive. Browse folders and rename files. Even expand connectivity options to include memory media such as an SD card or CompactFlash card.



## A consistent experience

No matter which imageRUNNER ADVANCE device you use, you'll enjoy a consistent, simple-to-use experience. All models in the Series use the same interface and print driver.



# Seamless integration. Smart productivity.

Imaging and enterprise applications smoothly converge. Cloud printing and mobility solutions offer the freedom to work anywhere. Multistep tasks become a single step. Speed and accuracy increase with the Series' streamlined, efficient workflow.



## On the go

In an increasingly mobile world, people need the ability to work remotely while maintaining their productivity. Now Canon delivers advanced solutions that keep work flowing effortlessly from wherever you are.



### Mobile devices

Print and scan from your laptop, iPad® or Android™ tablet, and iPhone®, Android, or BlackBerry® smartphone. Just log-in at a Canon imageRUNNER ADVANCE device to retrieve your job.



### Cloud portal

Gain quick access to certain cloud-based applications right from your Canon imageRUNNER ADVANCE device. Access or send documents directly from the cloud.



### Advanced Anywhere Print

This serverless solution lets you print to a connected imageRUNNER ADVANCE system, then conveniently and securely log-in at any supported device on the network to view and retrieve your print job.

## Extensive Print Solutions

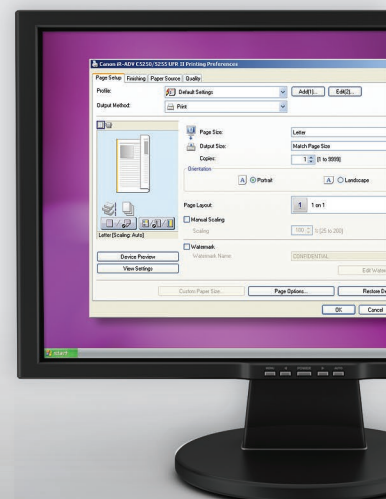
### Print Options

Canon's proprietary UFR II print technology is standard with these models. Options including Adobe® PostScript® 3™ and PCL 5e/6 are also supported. Enhance print productivity for multi-user environments with Canon's imagePASS-U2 print controller.

### Control

Canon's Driver Configuration Tool allows you to set specific defaults and custom profiles.

You can control costs with features, such as default duplex printing, as well as enhance security by forcing secure print.



## Easy collaboration



### Scan and store documents

Designed to streamline workflow, these models let you readily save, store, and access scanned documents from multiple locations. Store in built-in spaces, such as Mail Box and Advanced Box, or external spaces, such as memory media or another networked location.



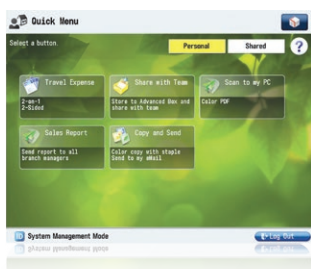
### Distribute documents

Distribute scanned documents to multiple destinations, such as e-mail and fax addresses and network folders, all in a single step. Now you can scan and convert both black-and-white and color documents directly into Microsoft PowerPoint or a Searchable PDF format. Universal Send supports an expanded range of file formats, including High Compression PDF/XPS, Adobe PDF Reader Extensions, and Encrypted PDF.



### Fax documents

These models support up to four fax lines and have the ability to share the fax function of another networked imageRUNNER ADVANCE model. The Job Forwarding feature routes incoming faxes to other systems, users, or destinations, including Canon LBP desktop models for total fleet integration.



## Single-step operation

Transform time-consuming, multistep tasks into a simple, single-step operation. Use Workflow Composer to create all-in-one buttons that can be registered in the Quick Menu. Scan and distribute documents with the touch of one button.

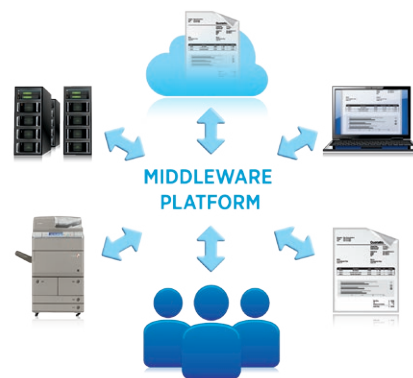


## Right from your PC

Enjoy even greater control and convenience right from your PC. Use the new imageRUNNER ADVANCE Quick Printing Tool to print, fax, preview, and convert files to PDFs, as well as monitor the status of your system—all without even opening an application. imageRUNNER ADVANCE Desktop lets you manage and prepare documents, combine multiple formats, preview files, and select the finishing functions.

## Integrate imaging with enterprise applications

Canon's Enterprise Imaging Platform middleware technology effortlessly links enterprise applications, such as Oracle® and SAP®, with Customer Relationship Management systems such as Salesforce.com®, ECM systems, and many others. The streamlined workflow automates complex business processes and offers easy access to information, saving both time and money.





# Robust security. Centralized management.

In today's networked world, you need greater control over your resources and data. The imageRUNNER ADVANCE 6200 Series delivers just that, with the ability to configure a system, safeguard information, and track resources, all right at your fingertips.



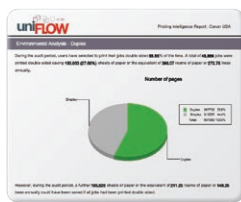
## Powerful command

Canon's advanced device management tools keep you in charge at every step, right from your desktop and even through the cloud. Now you can easily install and replace devices in your network, and migrate settings and data from old devices to new ones. The intuitive Remote User Interface lets you monitor a single device, while imageWARE Enterprise Management Console lets you track the activity of an entire fleet. Even receive automated notifications when supplies are low or service is needed.



## Safeguard data

From installation to retirement, this Series offers multilayered solutions that help safeguard your confidential information and support security compliance. HDD Erase, a standard feature, removes latent images from hard drives after each task. A security chip with tamper-resistant hardware helps protect passwords and encryption keys. IPsec provides security for data as it traverses the network. Options such as HDD Data Encryption and HDD Lock help protect information even after hard-drive removal.



## Maximize resources

The imageRUNNER ADVANCE systems offer advanced tools to help you track, manage, and influence user behavior. With solutions such as uniFLOW, it's easy to analyze output, encourage double-sided printing, and allocate costs by department, project, or client. You can also route jobs to the most cost-effective device.



## Secure authentication

With the need to keep data secure, large corporate offices will appreciate the imageRUNNER ADVANCE Series' server-less print environment. Users can print from anywhere within the network to any supported device via log-in authentication. This helps prevent printed documents from being left unattended.

## Security Features

### Document Security

- Document Scan Lock and Tracking
- Adobe LiveCycle® Rights Management ES2.5 Integration
- Encrypted Secure Print
- Watermark/Secure Watermark
- Copy Set Numbering
- Encrypted PDF
- Digital Signature PDF
- Fax Forwarding
- Fax Destination Confirmation

### Mail Server Security

- POP Authentication before SMTP
- SMTP Authentication

### Network Security

- IP/MAC Address Filtering
  - Port Filtering
- SSL Encryption
- Network Application On/Off
- USB Port On/Off
- Destination Restriction
- IPsec
- IEEE 802.1x (Wire/Wireless)

### Device Security

- IEEE 2600.1 Certification

### Data Security

- HDD Lock
- Trusted Platform Module
- HDD Data Erase and Initialize
- HDD Data Erase Scheduler
- HDD Encryption
- Advanced Box Security
- Mail Box Password Protection
- Job Log Conceal
- Removable Hard Disk Drive

### Logging/Auditing Security

- imageWARE Secure Audit Manager Express

### Authentication

- Department ID/Control Card Systems
- Device Level Log-in (SSO-H)
- Access Management System (AMS)
- Function Level Log-in via AMS
- Authorized Send
- Common Access Card (AA-CAC)
- Universal Login Manager

Note: Some features may be optional.





# Outstanding quality. Reliable performance.

The imageRUNNER ADVANCE 6200 Series keeps your business moving at peak efficiency with true multitasking power, the ability to customize workflow solutions, and the reliable output of professional-quality documents.



## Professional quality

Designed for high-volume environments, the imageRUNNER ADVANCE 6200 Series lets you conveniently and cost-effectively produce professional-quality reports, newsletters, and contracts in house with remarkable ease. Canon's state-of-the-art imaging technology and toner allow you to consistently generate striking images in rich black-and-white tones and 1200 dpi. And with flexible finishing options, everyone in your organization can make a great impression.



## Powerful performance

Accomplish multiple tasks concurrently with the exceptional speed your work demands. Canon's Advanced imageCHIP system architecture makes this possible with two dedicated processors that work together to process enormous volumes of data simultaneously.

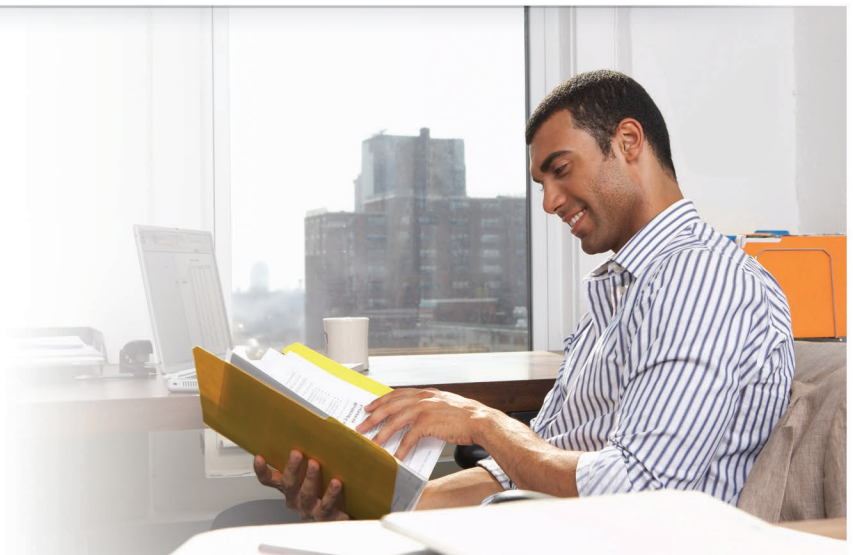


## Lots of uptime

Canon builds in signature reliability. The new advanced feeder with improved tray raise-up speed allows jobs to move rapidly through the system. Status notifications help keep supplies replenished, and automatic job re-routing maximizes efficiency. And with access to the latest technology and upgrades, you can power through your tasks.

## Targeted, integrated solutions

With productivity paramount, the imageRUNNER ADVANCE 6200 Series offers the ability to personalize the way your company gathers, organizes, and disseminates information. Canon's innovative MEAP® platform lets you develop custom solutions to meet specific workflow needs. And new levels of connector and link support enhance communication with existing systems as well as those you may acquire in the future.





# Strong commitment. Eco-conscious solutions.

The imageRUNNER ADVANCE 6200 Series incorporates innovative, eco-conscious solutions that keep your business operating efficiently while helping to reduce your environmental footprint.



## A clear strategy

### Greater energy efficiency

From the inside out, the imageRUNNER ADVANCE 6200 Series is designed for high energy efficiency and stellar performance. The combination of fusing technologies and pO toner helps lower overall energy consumption by minimizing power requirements and reducing energy use during warm-up and standby modes. With advanced technologies present in each model, the Series also meets ENERGY STAR® standards.



### Minimize Environmental Impact

All Canon suppliers are required to meet Canon's stringent Green Procurement policy and environmental terms. This helps the company exceed the toughest global standards set by the EU RoHS Directive, which restrict the use of certain hazardous substances.



### Reduction of CO<sub>2</sub> emissions

Through its Life Cycle Assessment (LCA) System, Canon has lowered CO<sub>2</sub> emissions by focusing on each stage of the product life cycle, including manufacturing, energy use, and logistics. These products are designed to be the smallest and lightest in their class, with less packaging to help make transportation more efficient.



## A responsible way to work

Canon knows that the world and the workplace need a greener workflow, and the imageRUNNER ADVANCE 6200 Series, rated EPEAT® Silver, delivers just that. Now you can seamlessly share and distribute digital documents and preview files to make changes prior to printing, helping to reduce the use of paper and toner. Print drivers are defaulted to duplex documents, encouraging two-sided printing to reduce waste. And with Secure Print, documents are sent to a device but not printed until a password is entered, contributing to a reduction in paper waste.

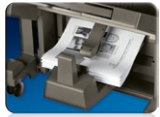
## Eco-conscious design

Canon is making a difference through creative ecological thinking. These models employ certain components fabricated with recycled plastic from retired products. Canon's innovative green technologies also include bio-based plastic, a plant-derived compound that replaces certain petroleum-based plastic parts.



# Customized for your work environment

## Finishing Options



### A Booklet Finisher-P1

- 3-tray, 4,000-sheet capacity
- Corner and double stapling up to 50 sheets
- Booklet-making up to 16 sheets

### B Document Insertion/Folding Unit-H1\*

- Insert preprinted sheets
- Up to 11" x 17"
- 1-tray, 100-sheet capacity
- Z-fold, C-fold

### C External 2/3-Hole Puncher-A1\*

- 2- and 3-hole punching

### Staple Finisher-P1



- 3-tray, 4,000-sheet capacity
- Corner and double stapling up to 50 sheets

### Document Insertion Unit-L1\*



- Insert preprinted sheets
- Up to 11" x 17"
- 1-tray, 100-sheet capacity



## Paper Feeding Options

### D Paper Deck Unit-A1

- 3,500-sheet capacity
- 14 lb. Bond to 80 lb. Cover
- Supports letter-sized paper
- Plain, Heavy



### Paper Deck Unit-D1

- 3,500-sheet capacity
- 14 lb. Bond to 80 lb. Cover
- Supports up to 11" x 17"
- Plain, Heavy

## Usability Options



### Upright Control Panel-E1

- 10.4" TFT high-resolution touch-screen
- Tilt-and-swivel capability
- Customizable UI screen

### USB Keyboard

- External keyboard
- Connects via USB interface
- Use with Utility Tray-A1 or with Universal Keyboard Stand-A1

## Printer Options\*\*

### PCL Printer Kit-AV1

### PS Printer Kit-AV1

### Direct Print Kit (for PDF/XPS)-H1

### imagePASS-U2



- Intel® Pentium® Processor E5300 2.6GHz
- 2GB RAM
- 250GB Hard Disk
- Adobe PS 3/PCL 5e/6

## Security Options

### Universal Send Security Feature Set-D1

### Universal Send Digital User Signature Kit-C1

### Encrypted Secure Print-D1

### Secure Watermark-B1

### Document Scan Lock Kit-B1

### HDD Data Erase Scheduler

### HDD Data Encryption and Mirroring Kit-C5

### Removable HDD Kit-AG1

## Accessibility Options

### Remote Operator's Software Kit-B1

### Voice Guidance Kit-F2

### Voice Operation Kit-C2

### Braille Label Kit-F1

### ADF Access Handle-A1



\* Requires Staple Finisher-P1 or Booklet Finisher-P1.

\*\* UFR II standard.

**Note:** For additional options and specifications, please refer to the back page.

Utilize the imageRUNNER ADVANCE to its full potential with professional services from Canon Solutions America

When selecting and implementing new technology, a highly skilled technical team is the difference-maker for a successful deployment. Canon Solutions America has the team of experts you need to help you acquire the right technology, solutions, and services for your organization. Our team of technical professionals draws upon decades of technical expertise and real-world experience to ensure you obtain the maximum benefit from your technology investment.

## Main Unit

### Operation Panel

|           |  |
|-----------|--|
| Standard: | 8.4" SVGA Full-Color TFT Screen          |
| Maximum:  | 10.4" SVGA Full-Color TFT Upright Screen |

### Memory

|           |            |
|-----------|------------|
| Standard: | 1.5 GB RAM |
| Maximum:  | 2 GB RAM   |

### Hard Disk Drive

|           |        |
|-----------|--------|
| Standard: | 160 GB |
| Maximum:  | 1 TB   |

### Network Interface Connection

|           |   |
|-----------|---|
| Standard: | 10Base-T/100Base-TX/1000Base-T                        |
| Optional: | Wireless LAN<br>(IEEE 802.11 via third-party adapter) |

### Other Interface

|           |   |
|-----------|---|
| Standard: | USB 2.0 (Host) x2, USB 2.0 (Device)                                       |
| Optional: | Device Port [USB 2.0 (Host) x2], Serial Interface, Copy Control Interface |

### Copy/Print Speed (Letter)

|       |              |
|-------|--------------|
| 6275: | Up to 75 ppm |
| 6265: | Up to 65 ppm |
| 6255: | Up to 55 ppm |

### First-Copy-Out Time (Letter)

|            |                        |
|------------|------------------------|
| 6275:      | As fast as 3.1 Seconds |
| 6265/6255: | As fast as 3.3 Seconds |

### Paper Sources (20 lb. Bond)

|           |  |
|-----------|--|
| Standard: | Dual 1,500-sheet Paper Drawers,<br>Dual 550-sheet Paper Cassettes,<br>100-sheet Stack Bypass |
| Maximum:  | 7,700 Sheets (with Paper Deck Unit Option)   |

### Output Paper Capacity (20 lb. Bond)

|           |   |
|-----------|---|
| Standard: | 250 Sheets (with Copy Tray)                             |
| Maximum:  | 4,000 Sheets (with Staple Finisher or Booklet Finisher) |

### Output Paper Sizes

|             |   |
|-------------|---|
| Cassette:   | 11" x 17", Legal, Letter, Letter-R, Executive, Statement-R, Custom Size<br>(5-1/2" x 7-1/8" to 11-3/4" x 19-1/4") |
| Bypass:     | 11" x 17", Legal, Letter, Letter-R, Executive, Statement-R, Custom Size<br>(4" x 5-7/8" to 11-3/4" x 19-1/4")     |
| Paper Deck: | Letter  |

### Acceptable Paper Weights

|                            |  |
|----------------------------|--|
| Paper Decks/<br>Cassettes: | 14 lb. Bond to 80 lb. Cover (52 to 220 g/m <sup>2</sup> )  |
| Bypass:                    | 14 lb. Bond to 140 lb. Index (52 to 256 g/m <sup>2</sup> ) |

### Warm-up Time

|                     |                    |
|---------------------|--------------------|
| From Power On:      | 30 Seconds or Less |
| From Sleep Mode:    | 30 Seconds or Less |
| Quick Startup Mode: | 7 Seconds*         |

### Power Requirements/Plug: 120-127 V AC, 60 Hz, 16 A/NEMA 5-20P

### Dimensions (H x W x D)

48" x 25-3/8" x 30-3/8" (1220 mm x 645 mm x 770 mm)\*\*

### Installation Space (W x D)

53-5/8" x 30-3/8" (1362 mm x 770 mm)\*\*

### Weight

Approx. 516 lb. (274 kg)\*\*\*

### Toner (Estimated Yield @ 6% Coverage)

Black: 56,000 Images

## Document Feeder

**Scan Method:** Single-Pass Duplexing Automatic Document Feeder

### Acceptable Originals

|              |  |
|--------------|--|
| Paper Sizes: | 11" x 17", Legal, Letter, Letter-R, Statement, Statement-R |
|--------------|--|

### Scan Speed (BW/Color; Letter)

|          |  |
|----------|--|
| Simplex: | Up to 120/85 ipm (300 dpi)<br>Up to 120/51 ipm (600 dpi)*  |
| Duplex:  | Up to 200/100 ipm (300 dpi)<br>Up to 120/51 ipm (600 dpi)* |

### Paper Capacity (20 lb. Bond): 300 Sheets

## Print Specifications

**Engine Resolution:** 1200 x 1200 dpi

### PDL Support

|           |                              |
|-----------|------------------------------|
| Standard: | UFR II                       |
| Optional: | PCL 5e/6, Adobe PostScript 3 |

### Print Driver Supported OS

UFR II, PCL 5e/6, Adobe PS 3:  
Windows\* (XP/Windows Vista\*/7/8), Windows Server (2003/2008/2008 R2/SBS 2011/2012), Windows Terminal Servers, Microsoft Clustering Server, Citrix, Macintosh\* (OS X 10.5.8 or later, UFR II and PS 3 only), VMware, SAP (PS and PCL Only)

### Direct Print Support

|           |   |
|-----------|---|
| Standard: | TIFF, JPEG                                |
| Optional: | PDF, EPS <sup>†</sup> , XPS <sup>††</sup> |

## Universal Send Specifications

### Sending Method

E-mail, I-Fax, File Server (FTP, SMB, WebDAV), Mail Box, Super G3 Fax (Optional)

### Communication Protocol

|               |                                    |
|---------------|------------------------------------|
| File:         | FTP (TCP/IP), SMB (TCP/IP), WebDAV |
| E-mail/I-Fax: | SMTP, POP3, I-Fax (Simple, Full)   |

### File Format

|           |   |
|-----------|---|
| Standard: | TIFF (BW), JPEG, PDF, PDF (Compact), PDF (Searchable), PDF (Apply Policy), PDF (Optimize for Web), PDF/XPS (OCR), PDF/A-1b, XPS, XPS (Compact), OOXML (.pptx) |
| Optional: | PDF (Trace & Smooth), PDF (Encrypted), PDF/XPS (Digital Signature), PDF (Reader Extensions)   |

## Fax Specifications

**Maximum Number of Connection Lines:** 4

### Modem Speed

|           |           |
|-----------|-----------|
| Super G3: | 33.6 Kbps |
| G3:       | 14.4 Kbps |

**Compression Method:** MH, MR, MMR, JBIG

**Sending/Recording Size:** Statement-R to 11" x 17"

## Store Specifications

**Mail Box (Number supported)**

100 User Inboxes, 1 Memory RX Inbox, 50 Confidential Fax Inboxes

### Advanced Box

|                         |   |
|-------------------------|---|
| Available               | Approx. 15 GB (Standard HDD),               |
| Disk Space:             | Approx. 629 GB (1 TB HDD)                   |
| Communication Protocol: | SMB or WebDAV                               |
| Supported Client PC:    | Windows (Windows 2000/XP/7/8/Windows Vista) |

### Memory Media

|           |  |
|-----------|--|
| Standard: | USB Memory                                       |
| Optional: | SD, SDHC, CompactFlash, Memory Stick, Microdrive |

## Security Specifications

### Standard

Department ID Management, Single Sign On-H, Access Management System (Device and Function Level Log-in), Secure Print, Trusted Platform Module, User Access Control of Advanced Box, Mail Box Password Protection, IPv6, Restricting Features (Restricting the Send Function, Restricting New Addresses on Address Book), SSL Encrypted Communication, SNMPv1/v3, MAC/IP Address Port Filtering, SMTP Authentication, POP Authentication before SMTP, HDD Initialize (Up to 9x), HDD Erase (Up to 3x), HDD Lock, IPsec, Adobe LiveCycle Rights Management ES2.5 Integration

\* If "Quick Startup Settings for Main Power" is set to "ON," it takes 7 seconds until the key operation on the Touch-panel Display is available after turning on the main power.

\*\* Without Upright Control Panel.

\*\*\* Including toner bottle and Duplex Color Image Reader Unit.

\* Standard color scan support is up to 300 dpi. Up to 600-dpi scanning requires Additional Memory Type D (512 MB).

† EPS can be printed directly only from Remote User Interface.

†† XPS cannot be printed directly from Web Access Software.

NOTE: Some accessories require additional equipment or may be prerequisites for other options. Some accessories cannot be installed simultaneously. Check with your Canon Authorized Dealer for details.

**For detailed specifications and a comprehensive list of optional accessories, see the imageRUNNER ADVANCE 6200 Series Product Specifications document.**

# Canon

CANON SOLUTIONS AMERICA

**Canon Solutions America, Inc.**

One Canon Park  
Melville, NY 11747

1.800.815.4000  
csa.canon.com

Learn more about the ENERGY STAR® program at [www.ENERGYSTAR.gov](http://www.ENERGYSTAR.gov).

As an ENERGY STAR® Partner, Canon U.S.A., Inc. has qualified these models as meeting the ENERGY STAR energy efficiency criteria through an EPA recognized certification body. ENERGY STAR and the ENERGY STAR mark are registered U.S. marks. Canon, imageRUNNER, imagePASS, MEAP, and the GENUINE logo are registered trademarks of Canon Inc. in the United States and may also be registered trademarks or trademarks in other countries. imageWARE is a registered trademark of Canon U.S.A., Inc. in the United States and is a trademark of Canon Inc. in certain other countries. All other referenced product names and marks are trademarks of their respective owners. Additional information on software requirements and compatibility is available at [usa.canon.com](http://usa.canon.com). Products are not manufactured for outdoor use; depiction of such is for artistic purposes only. Products shown with optional accessories. All printer output images are simulated. Canon U.S.A. does not provide legal counsel or regulatory compliance consultancy, including without limitations, Sarbanes-Oxley, HIPAA, GLBA, Check 21 or the USA Patriot Act. Each customer must have its own qualified counsel determine the advisability of a particular solution as it relates to regulatory and statutory compliance. Specifications and availability subject to change without notice. Not responsible for typographical errors.

©2014 Canon U.S.A., Inc. All rights reserved.

CSA-7/14-15  
0914R-CSA6200SR5-PDF-IH

